

U9 132 050



DIAL OPERATED ELECTRONIC ROOM THERMOSTAT WITH LCD DISPLAY

- Suitable for 230 V~ operation with switching load up to 5 (1) amps.
- Large LCD temperature display with heating and cooling symbols.
- Optional remote sensors - enables thermostat use in bathroom applications.
- Heating/Cooling/Off selector switch
- Simple to use dial operation with clear temperature settings from 6 °C to 30 °C.
- Wall mounted thermostat in elegant white design, only 85 mm wide x 85 mm high x 31 mm deep.
- Accurate temperature control for maximum comfort - differential 0.5 °C.
- Temperature range limiting stops to prevent accidental adjustment.
- Compliant with directives EEC 89/336, 73/23 & 93/68 CE

6 Tannery Yard - Witney Street - Burford
Oxfordshire - OX18 4DW - UK
Phone: 01993 824900
Fax: 01993 824990
Email: sales@emmeti.co.uk
Website: www.emmeti.co.uk

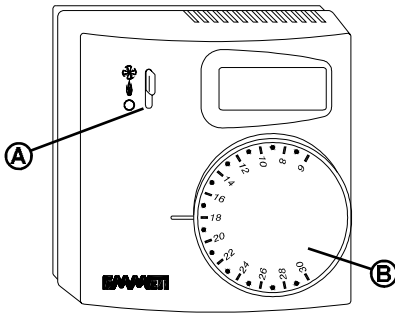


Fig. 1: External view.

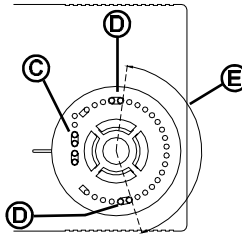


Fig. 2: Temperature range limiting.

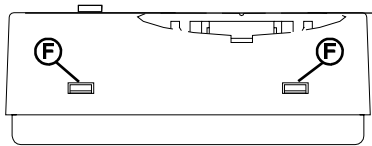


Fig. 3: Plastic teeth position.

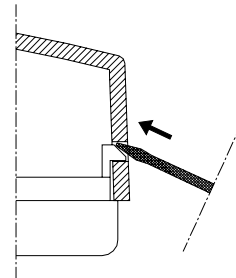


Fig. 4: Detaching front cover with screwdriver.

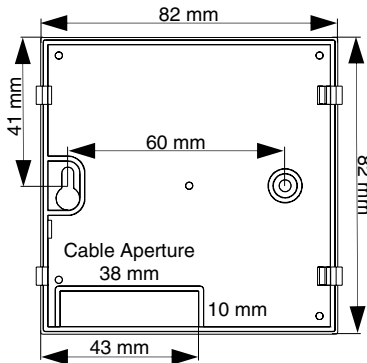


Fig. 5: Thermostat backplate dimensions.

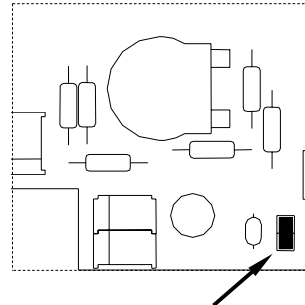


Fig. 6: Jumper position for remote sensor.