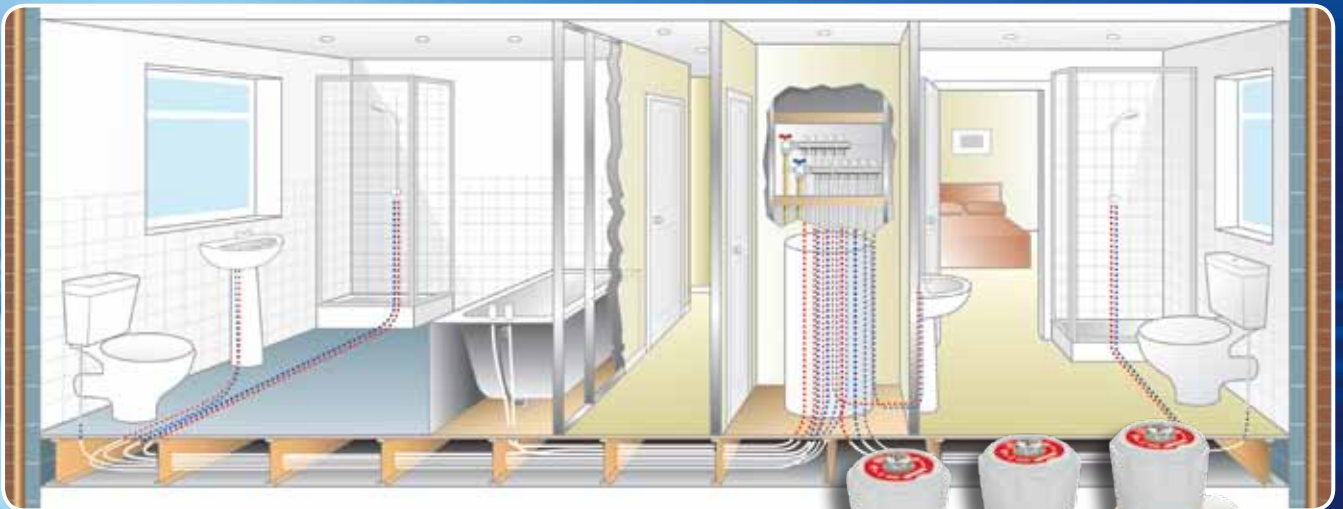


Do you want to reduce call out time on site?



The **Emmeti TopSan manifold** is a proven solution. Simply locate them in a partition wall close by the bathroom, recessed into a purpose built low cost plastic cabinet. When the engineer is on site for installation, troubleshooting or maintenance, simply isolate just the single appliance, leaving the rest of the system in working order.



For more information call us on **01993 824900**
or visit www.emmeti.co.uk

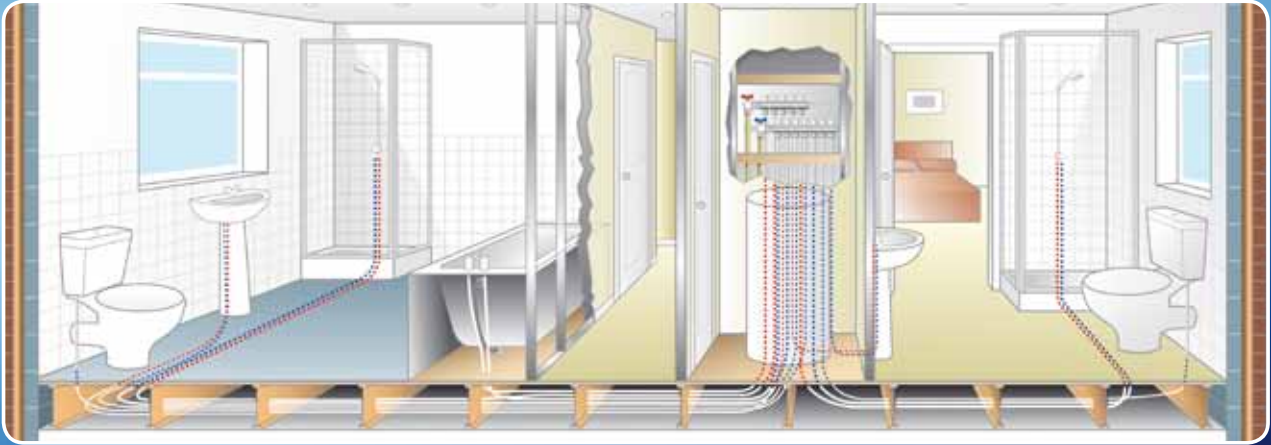
Radiator System
Manifolds

Plumbing
Manifolds

UFH System
Components

Zone
Controls

Fitting
Systems



Safety Switch in your Plumbing?



The **Emmeti TopSan manifold**, is a low cost, flexible way of managing your plumbing system; it allows the isolation of a single appliance in the event of a malfunction, leaving the rest of the system in full working order as well as giving you a host of other benefits including:

- 2-12 way manifolds allow the mix and match of the number of cold and hot ways installed, including the coverage of 2 bathrooms from one set of manifolds
- Reduced installation time on site - saving time and money
- 'No-leak' promise thanks to our monoblocco connection systems
- Discrete placement, the manifolds can be positioned in a plastic cabinet within a partition wall and the pipes are located within the wall cavity or ceiling void, giving an aesthetic finish to the project
- Part of the extensive range of Emmeti point to point heating manifolds, eliminating the use of tees and elbows

For more information call us on **01993 824900**
or visit www.emmeti.co.uk

Radiator System
Manifolds

Plumbing
Manifolds

UFH System
Components

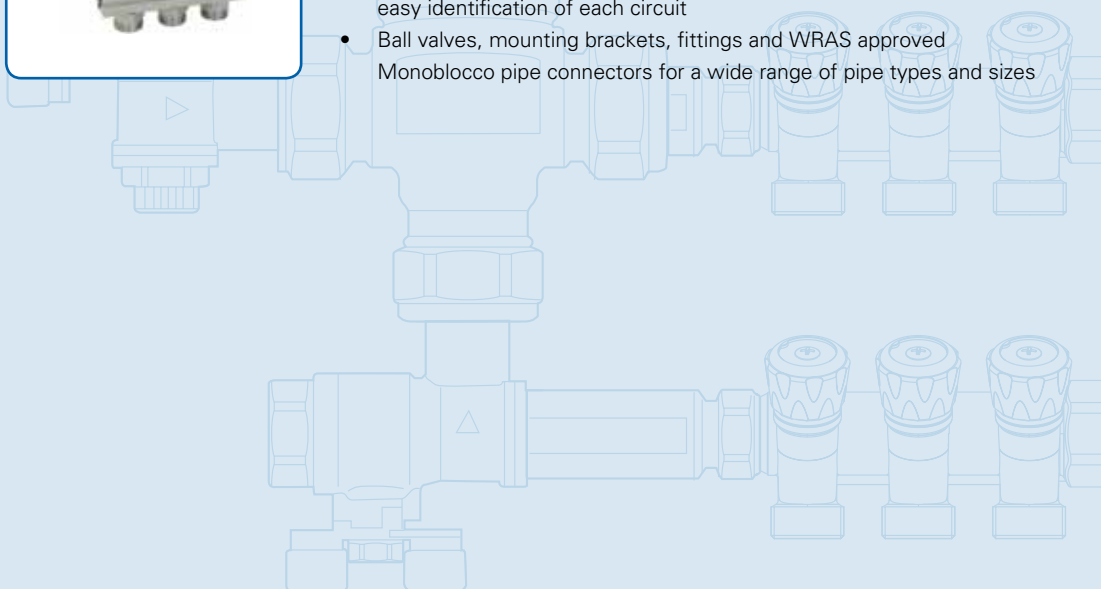
Zone
Controls

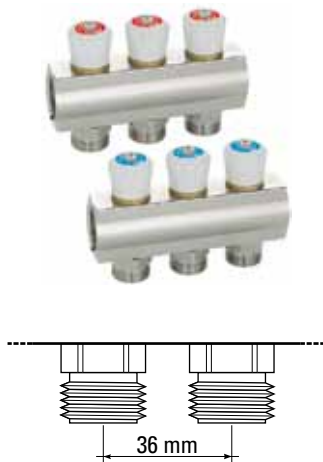
Fitting
Systems



Topsan

- WRAS approved nickel plated extruded brass manifold with $\frac{3}{4}$ " connection
- Available from 2 to 12 ways per manifold giving wide flexibility in meeting individual applications
- Isolating taps fitted to each outlet with red and blue tap labels for easy identification of each circuit
- Ball valves, mounting brackets, fittings and WRAS approved Monoblocco pipe connectors for a wide range of pipe types and sizes





**Topsan sanitary manifold nickel-plated brass with taps.
24x19 threaded outlets.**

Size	Ways	Pcs./Pack	Code
3/4"	2	1	01282050
3/4"	3	1	01282052
3/4"	4	1	01282054
3/4"	5	1	01282056
3/4"	6	1	01282058
3/4"	7	1	01282060
3/4"	8	1	01282062
3/4"	9	1	01282064
3/4"	10	1	01282066
3/4"	11	1	01282068
3/4"	12	1	01282070

Please order two rails, one rail for hot and one for cold supply. Separate blue and red labels are shipped with each order, with icons for each plumbed in item. These labels are applied by the installer on site.

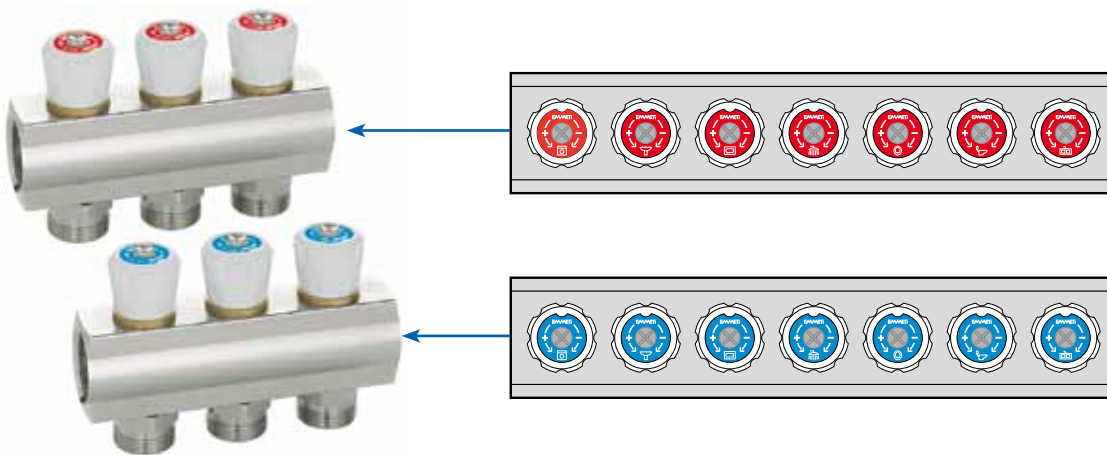
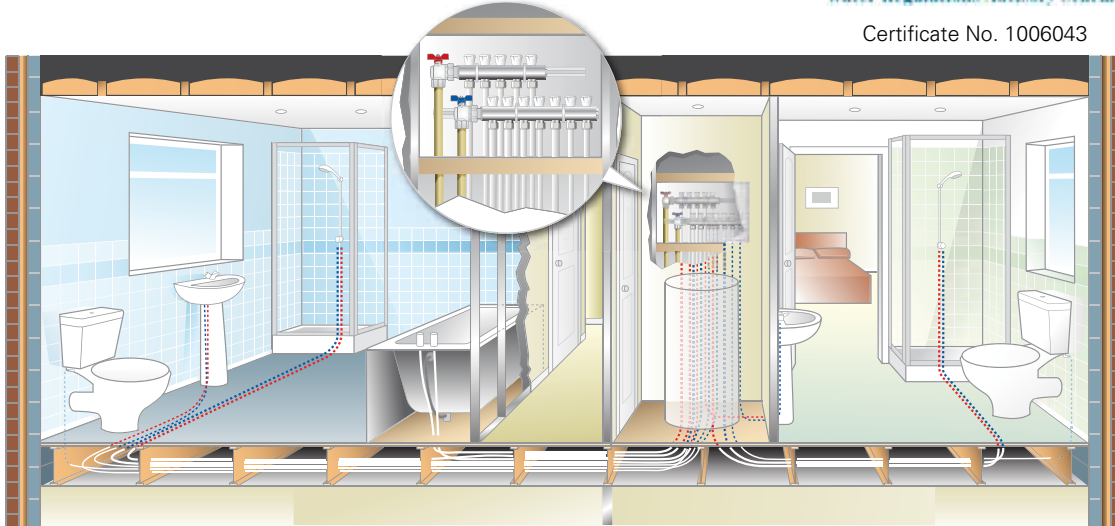
For mounting brackets, blanking plugs and other accessories, please turn to section "Manifold accessories at rear of section. For Monoblocco connectors see 'Manifold Accessories' at rear of this section or see section 17 'Monoblocco Connectors and Threaded fittings' for the complete range of Monoblocco connectors and fittings

Topsan

Application of Topsan sanitary manifold in typical bathroom and en suite rooms



Certificate No. 1006043



The advantages

The key advantage of the Topsan manifold is to allow greater than 4 outlets (up to 12-ways), without needing to bridge two or more Multiplex Manifolds together. This saves installation time.

Suitable for both plumbing and heating applications.

Can be supplied as a kit, including a mounting rail, wall brackets, pipe connectors, ball valves and blanking plugs.

Construction

- Brass header retrieved through a bar drawing process EN 12168 CW614N
- Head threads G 3/4"
- Lateral outlet threads M 24x19
- ABS white colour knobs
- Gasket in NBR
- Plate indicating the support services
- Takeoffs 36 mm centers

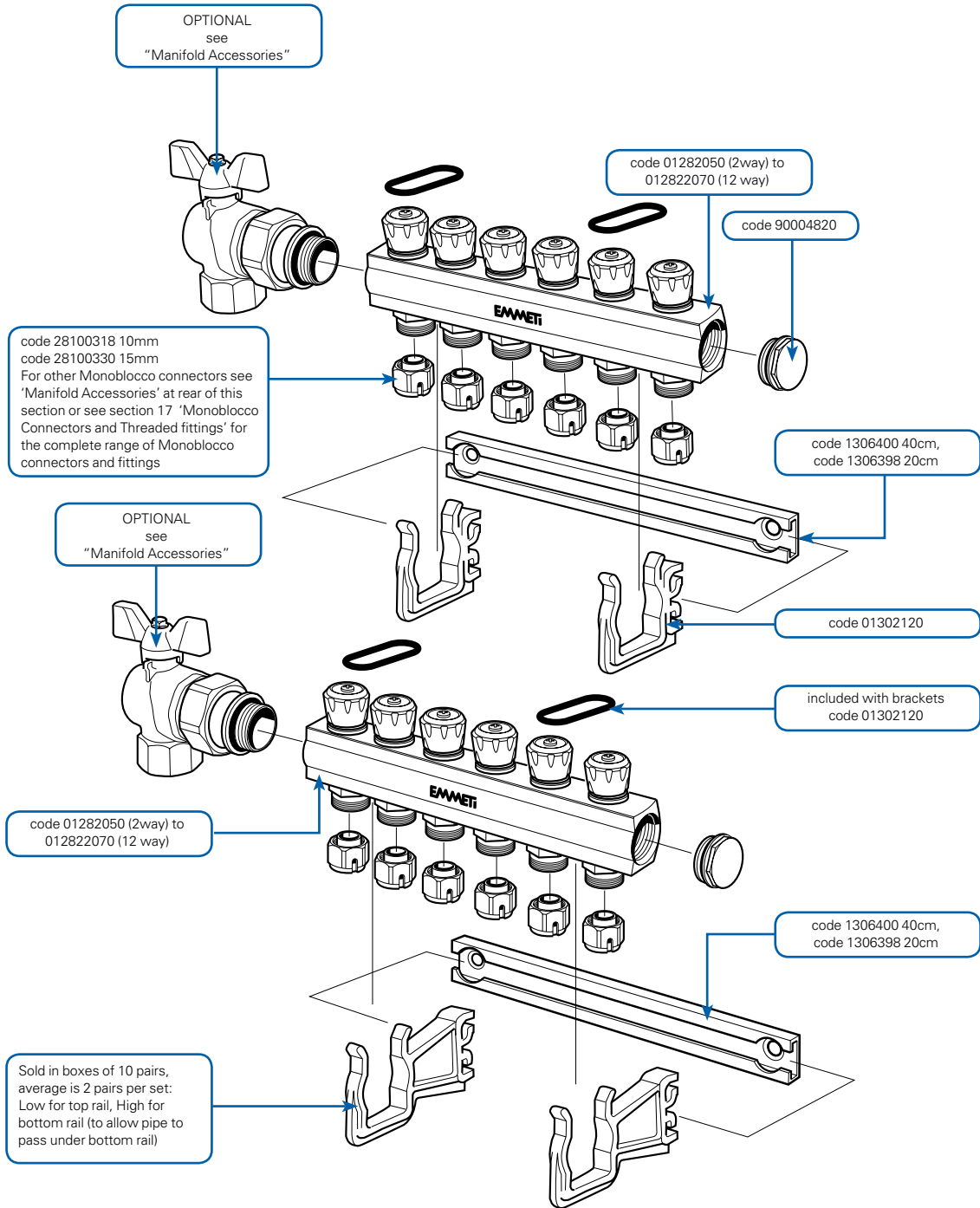
Technical data

Maximum operating pressure: 10 bar

Maximum operating temperature: 110 °C

Topsan (continued)

Topsan manifold assembly: exploded image of fully assembled kit



Notes:

TopSan Manifold set: The rail codes are for a single rail. You need two rail per manifold set.

Connectors:

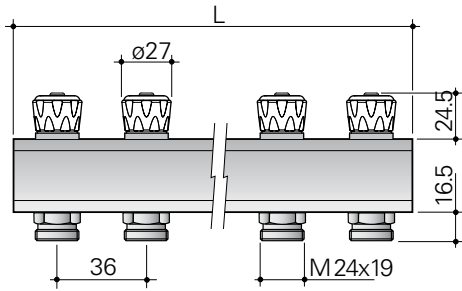
Calculate 1 per outlet, on both Heating flow and return rail, or Plumbing Hot and Cold rail.

E.g. a 9-way hot rail and a 7-way cold rail is 16 connectors.

Topsan (continued)

Sanitary manifold with bibcocks, nickel-plated, complete with 24x19 takeoffs connections

Connections & Dimensions



Type	2 ways	3 ways	4 ways	5 ways	6 ways	7 ways	8 ways	9 ways	10 ways	11 ways	12 ways
3/4" L mm	85	121	157	193	229	265	301	337	373	409	445

Note: distance between takeoffs 36 mm

Sanitary Manifold Accessories

**Plastic brackets support kits for Topsisn and Topway SN.**

Type	Size	Pcs./Pack	Code
10 pairs bracket support kit	3/4"	1	01302120

**Aluminium slider rail for bracket support kits, supplied with screw and rawlplug pack.**

Type	Pcs./Pack	Code
400 mm (*)	1	01306400
200 mm (**)	1	01306398

(*) Provided with four 4.5 mm DIA pre-drilled holes, in two pairs spaced 160 mm apart. Kiss cut at 200 mm. This allows you to use to use two shorter 200 mm lengths, each with two drill holes.

(**) Shorter version for ease of installation. Provided with two 4.5 mm DIA pre-drilled holes.

**Termobox - white plastic universal manifold box.**

Size	Pcs./Pack	Code
310 x 310 x 90	5	01302090
460 x 310 x 90	3	01302100
610 x 310 x 90	2	01302110

Integrated into the back panel of the box are two slider rails, representing an upper and lower manifold rail. Choosing a plastic bracket support kit allows you to match your manifold requirements exactly, including the facility to offset the flow manifold from the return manifold.

Suitable for use with hot and cold plumbing manifolds, as well as heating manifolds.

All walls have snap out panels, allowing the installer control of the manifold and pipe orientation in the box.

Made of plastic material for toughness and durability (box in ABS, cover in PS shock resistant polystyrene supports in PA nylon 6)

WRAS
Water Regulations Advisory Scheme

**Nickel-plated male and female blanking plugs.**

Type	Pcs./Pack	Code
3/4" M with o-ring seal	30	90004820
24x19 F*	30	90004950

* Use appropriate washer from immediately below when ordering these items.

WRAS
Water Regulations Advisory Scheme

**Female washer**

Type	Pcs./Pack	Code
3/4" F	1	90008200
24x19 F	1	90037490

Sanitary Manifold Accessories (continued)



Straight Progress ball valves with pipe union

Size	Pcs./Pack	Code
3/4"	1	01306140

Price in pairs. Includes o-ring sealing faces.



Right-angle Progress ball valves with pipe union

Size	Pcs./Pack	Code
3/4"	1	01306180



24x19 seal for plastic PB pipe

Size	Connection	Pcs./Pack	Code
Ø 10 Polybutylene	24x19	50	28100318
Ø 12 Polybutylene*	24x19	50	28100321
Ø 15 Polybutylene	24x19	50	28100330

When using these with plastic pipe, please ensure you use the plastic pipe insert provided for by the manufacturer of the pipe you are using. * For high volume purchase only



Monoblocco connector for copper pipe, nickel-plated

Size	Connection	Pcs./Pack	Code
10	24x19	50	01321410
15	24x19	5	01321415



Monoblocco connector for multi-layer pipes, nickel-plated

Size	Connection	Pcs./Pack	Code
12 x 1.6	24x1	50	28100355
14 x 2	24x19	50	28100356
16 x 2	24x19	50	28100358
16 x 2.25	24x19	50	28100360
17 x 2	24x19	50	28100362
18 x 2	24x19	50	28100364
20 x 2	24x19	50	28100366

Topway SN Accessories (continued)

WRAS
Water Regulations Advisory Scheme



Monoblocco connector for PEX and PB pipes, nickel-plated

Size	Connection	Pcs./Pack	Code
12 x 1	24x19	50	28100320
12 x 2	24x19	50	28100322
14 x 2	24x19	50	28100324
15 x 1.5	24x19	50	28100325
15 x 1.7	24x19	50	28100326
15 x 2.5	24x19	50	28100328
16 x 1.5	24x19	50	28100332
16 x 2	24x19	50	28100334
16 x 2.2	24x19	50	28100336
17 x 2	24x19	50	28100340
18 x 2	24x19	50	28100342
18 x 2.5	24x19	50	28100344
20 x 2	24x19	50	28100346
20 x 2.8	24x19	50	28100348



27mm - 30mm spanner for tightening takeoffs

Pcs./Pack	Code
1	01306046

This specially designed tool allows the installer to easily tighten the manifold outlets in the 36mm interaxial space provided.

The 30mm is designed for use with special larger Monoblocco connectors.



27mm spanner for tightening takeoffs

Pcs./Pack	Code
1	01306054

Up to Ø 18 only. This is a dedicated low cost shoulderless spanner for manifolds with 36mm interaxials.